

# HLG Family – 40~320W High Performance Metal Case

- HLG-40H/60H/80H/100H/120H/150H/185H/240H/320H
- Application: LED streetlamp, LED sign board, outdoor LED lighting
- High efficiency up to 95%
- Aluminum Case & IP67 rated, IP65 (A-type)
- “CV+CC”, can direct connecting to LEDs
- 2-stage PFC
- PF>0.9 & THD<20%
- Input range 90~305VAC
- Certificate: UL8750
- -40°C can start up
- 5 years warranty



*Your Reliable Power Partner*

[www.meanwell.com](http://www.meanwell.com)

# HLG Family — Multi-Option



A Type



B Type



C Type



D / Blank  
Type

- Different I/O style: (HLG-240(H)-XX□)

A type – IP65, Vo/Io adjustable by removing the rubber stopper

B type – IP67, 3-in-1 dimmer via control cable

C type – non IP, terminal block for I/O, Vo/Io adjustable by removing the rubber stopper

D-type – IP67, timer dimming

Blank – IP67, Vo / Io can't be adjusted

- Optional junction box (75\*61\*36mm)

- Can assemble on HLG-80H~320H

- **HLG-80H-XXBL certified to UL listed**

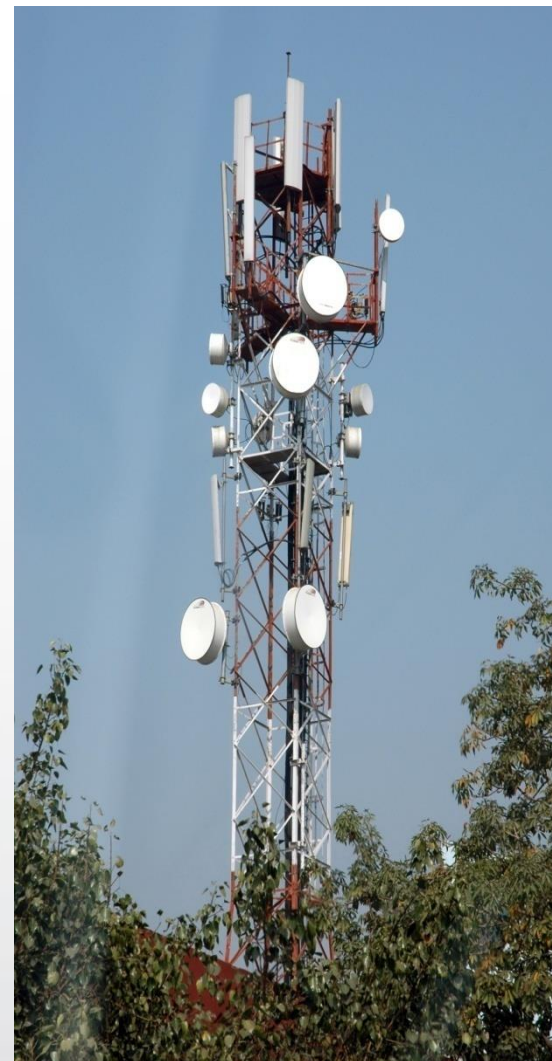


# HLG-600H Series — 600W Single Output with PFC

- **Family:** HLG-40H/60H/80H/100H/120H /185H/240H/32H/600H
- **Application:** LED street lighting, general indoor/outdoor lighting and decorative lighting
- **Auxiliary output:** 5V/0.5A
- **Built-in remote On/Off control**
- **IP67/IP65 design for indoor or outdoor installations**
- **No load power consumption < 0.5W (R/C active)**
- **Universal AC input 90~305V**
- **Built-in active PFC function**
- **High efficiency up to 96%**
- **Protection:** OLP, OVP, OTP
- **UL8750, EN61347-2-13, CE approved**
- **4kV surge (6kV no damage)**
- **-40°C can start up**
- **5 years warranty**



# Applications:



*Your Reliable Power Partner*

[www.meanwell.com](http://www.meanwell.com)

# HLG-60H/80H/120H/185H-C Family

## 70W~200W High Vo Single Output

- **Constant current design, high output voltage**
- **Rated current ranges 350/500/700/1050/1400mA**
- **Application: LED streetlamp, decorative lighting, general outdoor lighting**



	HLG-185H-C500 □	HLG-185H-C700 □	HLG-185H-C1050 □	HLG-185H-C1400 □
RATED CURRENT	500mA	700mA	1050mA	1400mA
CURRENT ACCURACY	±5.0%			
CONSTANT CURRENT REGION Note.6	200V ~ 400V	143V ~ 286V	95V ~ 190V	71V ~ 143V